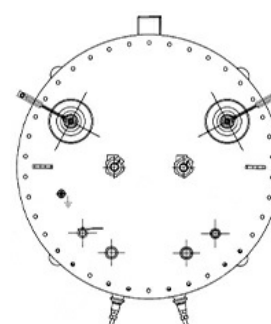
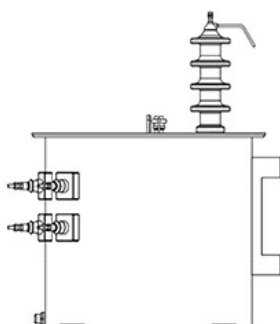
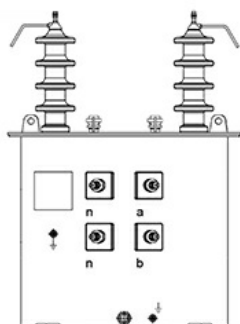


Transformer, Pole Type, 012-05681, Single Phase Oil Immersed Dist Transformer 25KVA 7.62/13.2 120/240 SS



Dimensions

Length	710.0 mm
Height	930.0 mm
Total Weight	420.0 Kg
Oil Weight	150.0 Kg
Weight of Active Parts	210.0 Kg

Accessories

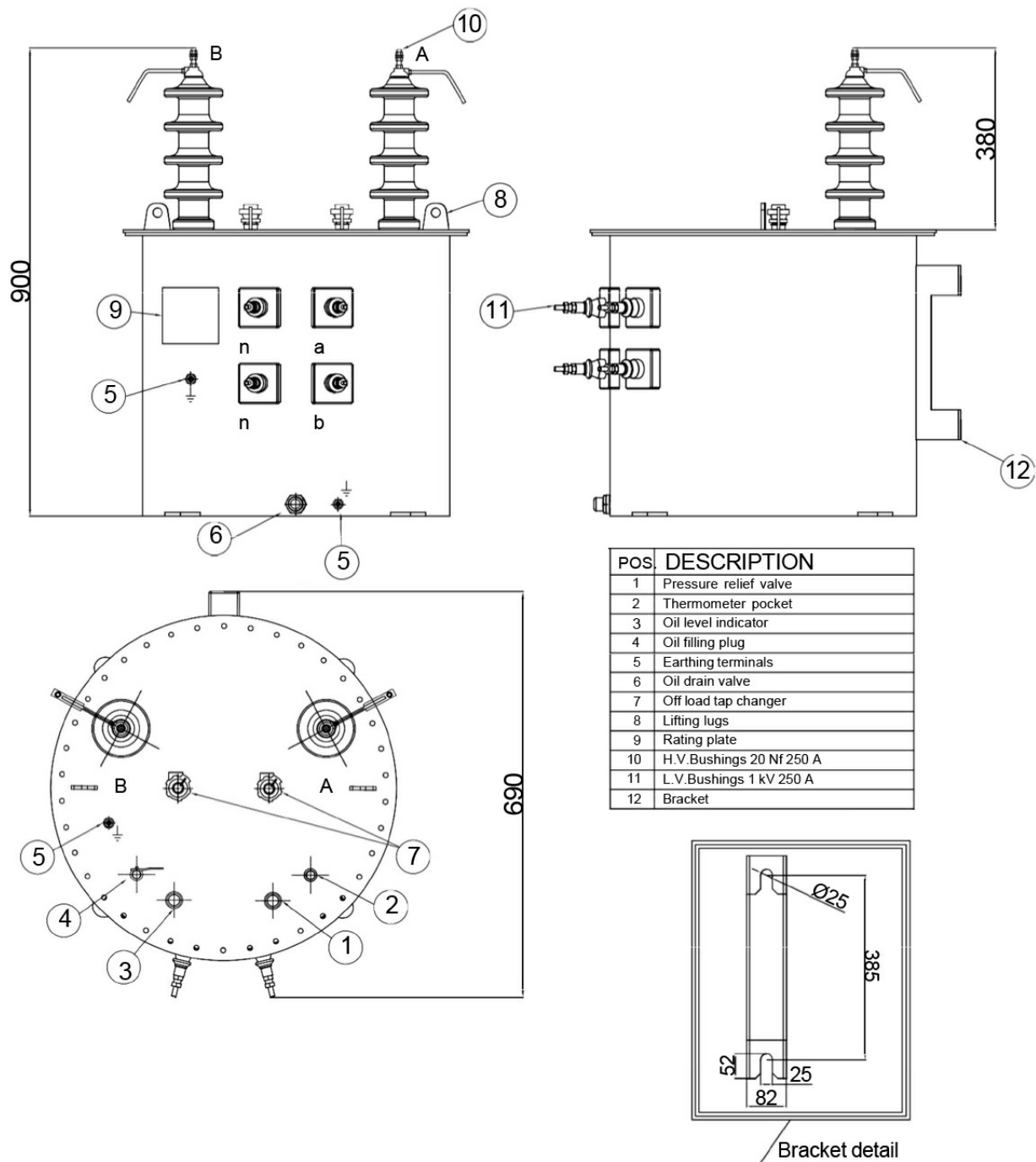
Accessories supplied with transformer	<ul style="list-style-type: none"> • Rating Plate • Oil level indicator • HV - LV Porcelain bushings • Pressure relief valve • Off load tap changer • Earthing terminals • Oil filling plug • Oil drain valve • Lifting Lugs • Thermometer pocket
---------------------------------------	---------------------------------------------------------------------------------------------------------------------------------------------------------------------------------------------------------------------------------------------------------------------------------------------------------------------------------------------------

The above design is only a sample of the options available, for reference purposes only. Our policy of continuous improvement may result in a change of specifications without notice. If any discrepancies might be between the data sheet values and standards, we reserve the rights to make technical changes. Our company will not be held responsible, as all or any of pictures, drawings, weights and dimensions details or other elements in this document are only indicative and must not be considered contractual. Contact our sales team for other specifications or custom made products. Contact our sales team for other specifications or custom made products.

General Specifications

Type	Pole Mounted / Oil Immersed Hermetically Sealed
Number of Phase	3.0
Frequency	60.0 Hz
Rated Power	25.0 kVA
Rated Voltages	7.62 (13.2) / 0,12 (0,24) kV
Voltage Regulation Range	$\pm 2 \times \% 2,5$ (Off load HV Side)
Vector Group	li0
Type of Cooling	ONAN
Overload	According to IEC 354
Over Voltage	0.05
Impedance Voltage (at C.M.R. 75°C)	4,0 \pm % 10
Short Circuit Withstand Duration	2s
Power Frequency Voltage Level (HV/LV)	20 kV (38 kV) / 3 kV
Impulse Voltage Level (BIL) (HV/LV)	60 kV (95 kV) / -
Load Losses (at C.M.R. 75°C)	800.0 W
No-Load Losses (at normal voltage)	230.0 W
Max. Ambient Temperature	40.0 °C
Windings Temperature Rise	65.0 °C
Oil Temperature Rise	60.0 °C
Conductor Material	Electrolytic Aluminium
Standards	IEC 60076

The above design is only a sample of the options available, for reference purposes only. Our policy of continuous improvement may result in a change of specifications without notice. If any discrepancies might be between the data sheet values and standards, we reserve the rights to make technical changes. Our company will not be held responsible, as all or any of pictures, drawings, weights and dimensions details or other elements in this document are only indicative and must not be considered contractual. Contact our sales team for other specifications or custom made products. Contact our sales team for other specifications or custom made products.



The above design is only a sample of the options available, for reference purposes only. Our policy of continuous improvement may result in a change of specifications without notice. If any discrepancies might be between the data sheet values and standards, we reserve the rights to make technical changes. Our company will not be held responsible, as all or any of pictures, drawings, weights and dimensions details or other elements in this document are only indicative and must not be considered contractual. Contact our sales team for other specifications or custom made products. Contact our sales team for other specifications or custom made products.